

UTV670 ROV

www.pharosoffshoregroup.com



PHAROS
OFFSHORE GROUP

The **UTV670 TROV** is a highly flexible trenching ROV. Based on tried and tested control system & vehicle design, this trencher has been a proven burial solution on multiple product types throughout the world.

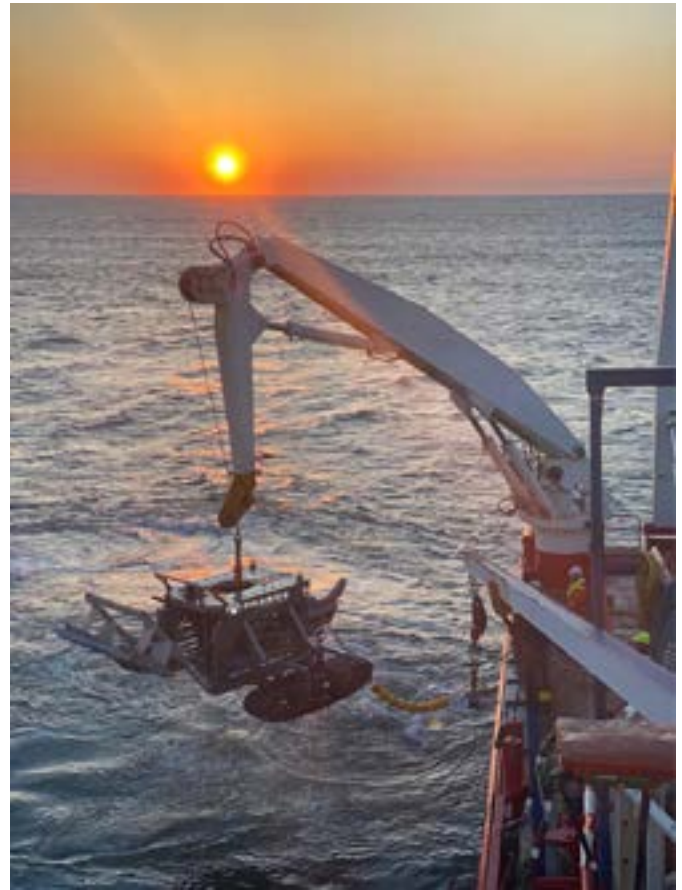
Complete with a vast amount of auxiliary functions, the system can be used for tasks such as manipulator works and light IMR works.

Additionally the system allows the client to perform multiple survey tasks with its unique ability to track at efficient rates directly on the product route.

The vehicle features many proven principles of cable burial ROV design, including:

- A field-proven method for cable burial in both cohesive and non-cohesive soils
- Jetting equipment to meet a wide range of burial requirements, including cable diameter and soil conditions, single sword hard ground options are included in the system design.
- Burial tool that stores fully protected within the envelope of the ROV structure when not in use.

Our system is built for easy mobilization with all major equipment in 20ft containers, ensuring it is deployable globally.



Get in touch

✉ info@pharos-offshore.com
☎ +44 (0)1670 281980

📍 Wimbourne Quay, Port of Blyth
Blyth, NE24 1PX

www.pharosoffshoregroup.com

General

Name: UTV670 - ROV Trencher

Manufacturer: Sub Atlantic

Year Built: 2008

Year Upgraded: 2014

Technical Equipment

Cameras: Bowtech Divecam
(High Resolution)

Lighting: 6 x 250W halogen
lights 6 channel light
dimmer

Pan & Tilt: P/T and a tilt 0-90°
Pan and tilt angle

Imaging: OA Sonar

Cable tracking system: Optional TSS440
or TSS 350

Main Characteristics

Operating Depth: Surface pumps 100m
Subsurface pumps
available upon request

Dimensions: Width 4.54m (with tracks)
Length 2.89m
Height 1.82m

Power: 440v AC (3 phase)

General Instrumentation

Hydraulic Oil: Shell Tellus (viscosity grade 32)

Jet Pump: Surface-Jet pump, 700 m³/h. at 10
bar

Jet Pump: Typical 500KW supply each - 2 x
700 m³/h. at 16 bar

**Remotely Variable
Power Draw:** 180 to 300 kW. Ship usage
power-draw variable to sword
configuration and thruster layout

Trenching Speed: 100 m/h in <50 kPa
(estimate based on previous
performance)

*THE VEHICLE MAY BE SUBJECT TO RE-CONFIGURATION
AS PROJECT PROGRESSES, IN ORDER TO ENSURE
OPTIMISED OPERATION UNDER PRESENT SEABED
CONDITIONS. ANY RECONFIGURATION IS OPERATIONAL
TIME*

Trenching Depth: Single Sword UT10 – 1.0m
Single Sword UT22 – 2.1m

Trench Width: 250/ 360 mm maximum Max

Tracking Record: 0.4 knots - 740m/hr (survey speed)

Cable Types: Telecommunication, Power
(max diameter 360 mm)

Get in touch

✉ info@pharos-offshore.com
☎ +44 (0)1670 281980

📍 Wimbourne Quay, Port of Blyth
Blyth, NE24 1PX

www.pharosoffshoregroup.com